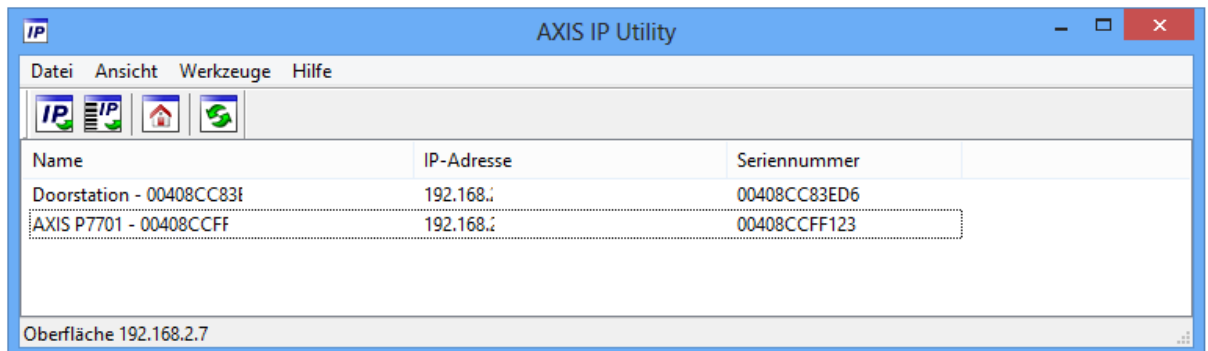




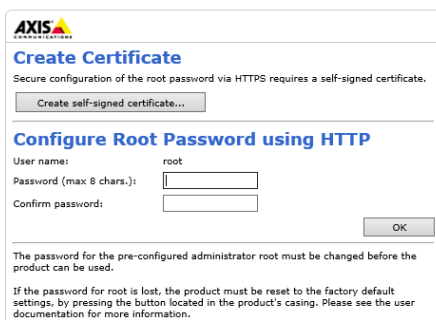
English

How to connect the door station to a television (TV) screen or analog monitor

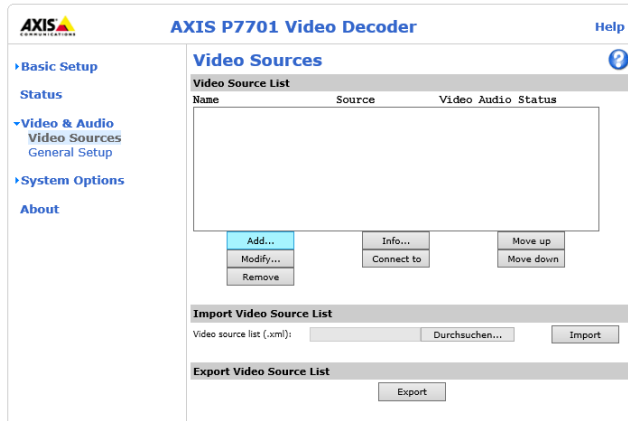
- Buy an AXIS P7701 Video-Decoder: http://www.axis.com/products/cam_p7701/
- The Video-Decoder supports video and one-way audio, so you can see who is in front of the door and listen to the visitor. Talking to the visitor, opening the door and hearing the door-bell is not supported by the Video-Decoder.
- Connect the Video-Decoder to your local network (LAN) and power. The Video-Decoder MUST be in the same LAN as the door station!
- Wait for 2 minutes
- Save the IP Utility on the desktop of a Windows PCs, which is located in the same local area network (LAN) as the door station
<http://www.myintercom.de/downloads/iputility.exe>
- Start the IP Utility with administrator rights (right click on "iputility.exe"> Run as Administrator)
- You will see the door station as well as the Video-Decoder "AXIS P7701" within the IP Utility listing, if the system is properly connected (network, power) and is functional („Doorstation – 00408C...“)



- Enter the IP-Address of the AXIS P7701 in your webbrowser (the screenshot from above is just an example!)
- Set the root password to "pass"



- Go to "Video & Audio > Video Sources" and click "Add..."



- In the window that appears enter the data as shown below. The "Network address" must be the IP-Address of the door station as shown in the IP Utility. "User name" and "Password" must be a valid user name and password which you have added to the myintercom doorstation using the myintercom App ("myintercom App > Settings > Administration").

Video Source Settings

General Settings

Name:

Sequence mode: Auto mode Display time: (seconds)
 Manual mode

Network Settings

Network address:

User name:

Password:

Video port:

HTTP port:

HTTPS port:

Transport method:

Video & Audio Settings

Stream profile: No profile

Video type:

Resolution: Source setting

Compression: Source setting [0..100]

Audio:

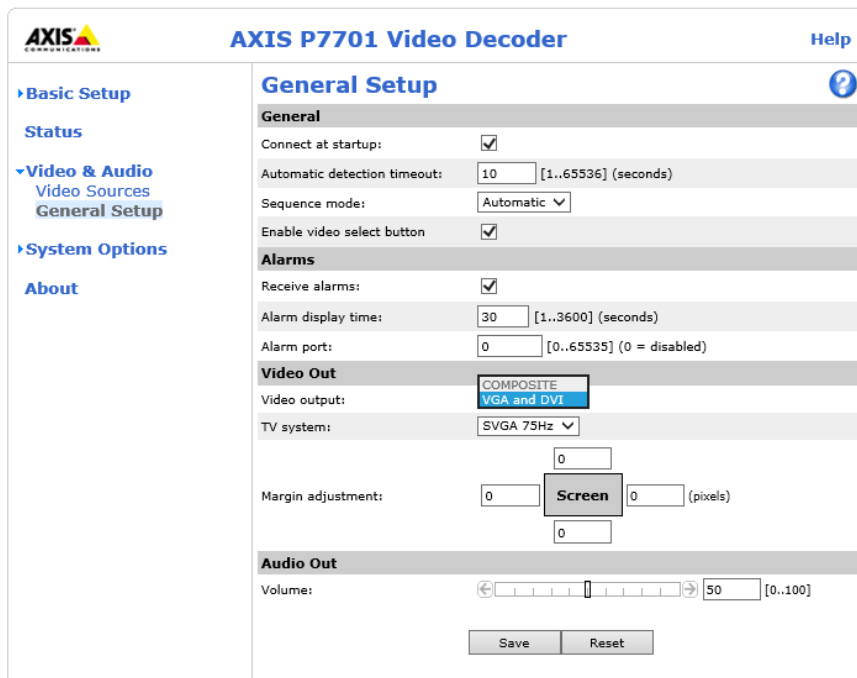
Other Settings

PTZ preset: No preset

- Press "OK" to save the settings. You will see if the Video-Decoder is able to connect to the door station (Status: "OK").



- Go to "Video & Audio > General Setup" and set the "Video out" either to "COMPOSITE" or "VGA and DVI" and click "Save" to save the settings.



- That's it, now you can connect your television (TV) screen or analog monitor to the Video-Decoder.